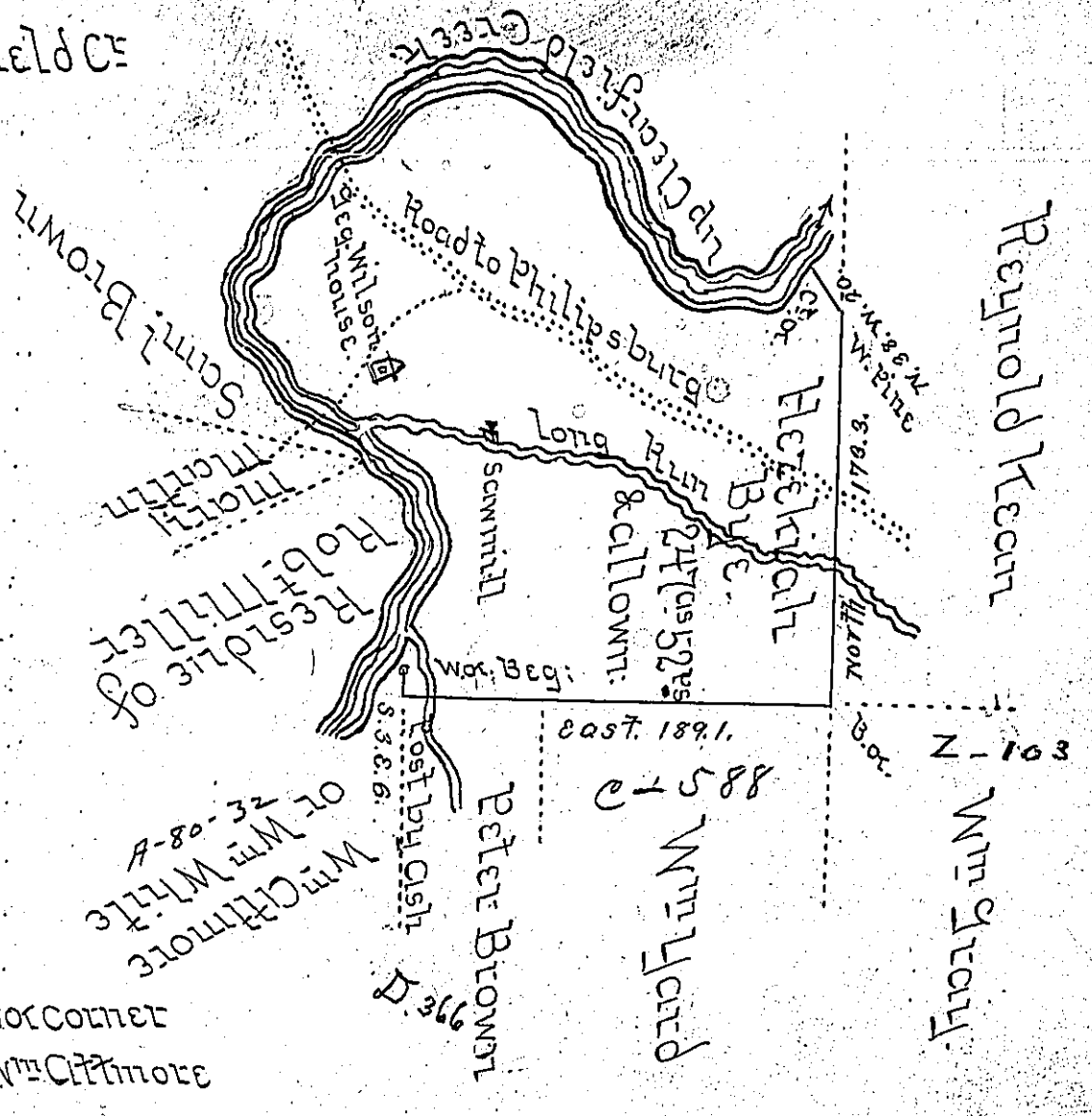


Courses & Dist. up Clearfield Co

1. S. 70. W. 16 ²³ "	18. S. 50. W. 12 ²⁵ "
2. S. 60. W. 4"	19. S. 46. W. 18"
3. S. 81. W. 21"	20. S. 52. W. 39"
4. S. 80. W. 6"	21. S. 40. W. 22"
5. N. 72. W. 10"	22. S. 21. W. 26"
6. N. 58. W. 6"	23. S. 11. E. 6"
7. N. 48 1/2. W. 9"	24. S. 26. E. 17"
8. N. 37. W. 14"	25. S. 48. E. 27"
9. N. 31. W. 30"	26. S. 66. E. 49"
10. N. 48. W. 28"	27. S. 42. E. 20"
11. N. 42. W. 18"	28. S. 25. E. 27"
12. N. 56. W. 8"	29. S. 10. E. 30"
13. N. 71. W. 5"	30. South. 6"
14. N. 87. W. 6"	31. S. 16. W. 17"
15. N. 72. W. 6"	32. S. 26. W. 12"
16. N. 83. W. 14"	33. S. 58. W. 8"
17. S. 66. W. 10"	34. S. 73. W. 27"

TOWNSHIP CORNER
of Wm. CATTMORE



Situate in Clearfield County, Bradford Township containing Two hundred and forty seven acres and fifty two perches and allowance &c. Surveyed the 11th September 1813 and reexamined and corrected the 26th of June 1818 granted to Heretiah Bye by Warrant dated the 5th of July 1813. Note At the time of the Survey George Wilson and family reside on the improvement, which consists of a Dwelling house, Barn, Sawmill, and near one hundred acres of Meadow and plough land cleared &c.

Charles Mezzyulny D.S.

To Jacob Spangler Esq^r
Surveyor General

IN TESTIMONY that the above is a copy of the original remaining on file in the Department of Internal Affairs of Pennsylvania, made conformably to an Act of Assembly approved the 16th day of February, 1833, I have hereunto set my Hand and caused the Seal of said Department to be affixed at Harrisburg, this—second—day of February—1907

James P. Brown
Secretary of Internal Affairs